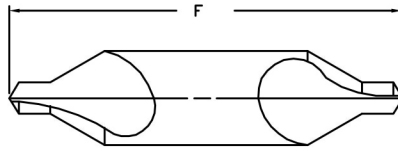
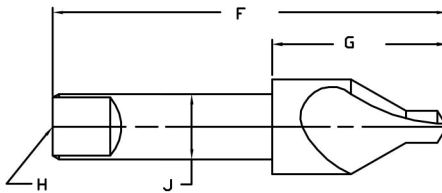


NOTE: THIS DRAWING IS THE PROPERTY OF THE LINK INDUSTRIES AND IS FURNISHED ON THE CONDITION THAT IT IS NOT TO BE REPRODUCED OR COPIED AND IS NOT TO BE USED, DIRECTLY OR INDIRECTLY, IN THE MAKING OF DRAWINGS, PRINTS, APPARATUS, OR PARTS THEREOF, WITHOUT WRITTEN AUTHORIZATION.
LINK INDUSTRIES, INDIAN RIVER, MICH.

REVISIONS				
ZONE	REV	DESCRIPTION	DATE	APPROVED

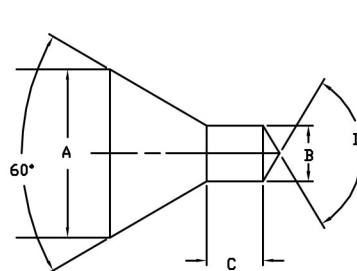


DED = DOUBLE END DRILL

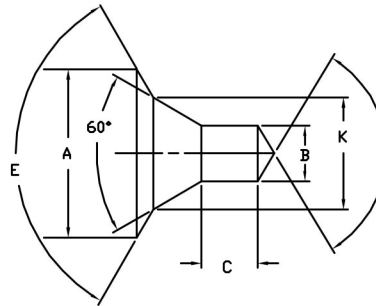


SED = SINGLE END DRILL

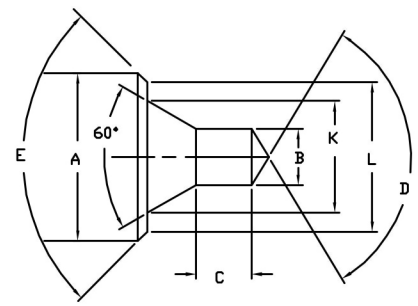
SHANK TYPE
SS = STRAIGHT



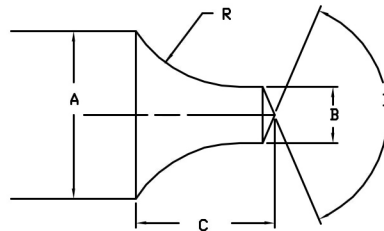
ST TYPE



B & S TYPE



SPL = SPECIAL TYPE



R = RADIUS TYPE

NOTE: ALL DIMENSIONS, TOLERANCES, AND MATERIALS NOT SPECIFIED ARE TO BE MANUFACTURERS SPECIFICATIONS.

SHAPE	TYPE	DIAMETER		DRILL LENGTH	INCLUDED ANGLE	LENGTH		SHANK		DIAMETER				MATERIAL			SURFACE TREATMENT	ADDITIONAL DATA
		BODY	DRILL			OAL	BODY	TANG	TYPE	DIA	BELL	RECESS	RADIUS	TYPE	GRADE	HARDNESS ROCKWELL		
A	B	C	D	E	F	G	H	J	K	L	R							
INFORMATION																		
CUSTOMER SUPPLIED TOLERANCES																		

SPECIAL INSTRUCTIONS

COATING

ROCKWELLS UNLESS OTHERWISE SPECIFIED

DO NOT SCALE DRAWING

TIN
TiAlN
AlCrN
ta-C

M-2 62-63.5
M-42 65-66
T-15 65-67
PM-M48 65-67

STANDARD TOLERANCE
.00 +/- .010
.000 +/- .005
.0000 +/- .0005
UNLESS OTHERWISE SPECIFIED
ALL ANGLES +/- 1°

MATERIAL:

HEAT TREAT & FINAL FINISH



LINK INDUSTRIES

2208 SOUTH STRAITS HWY
INDIAN RIVER, MI 49749
TEL: 234-238-9012 FAX: -7202

JOB NAME:		DRAWN BY:	
PART NAME:		CHECKED BY:	
SIZE:		APPROVED BY:	
FSCM NO.	DWG NO.	SCALE	REV
DATE		SHEET	